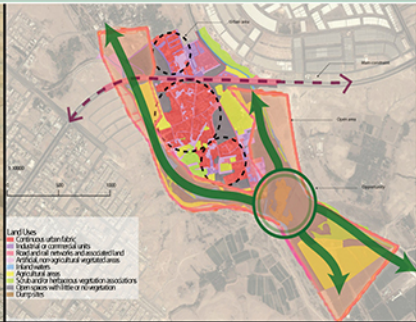
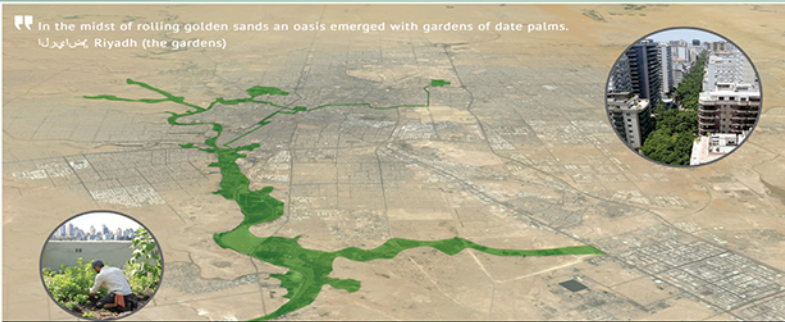
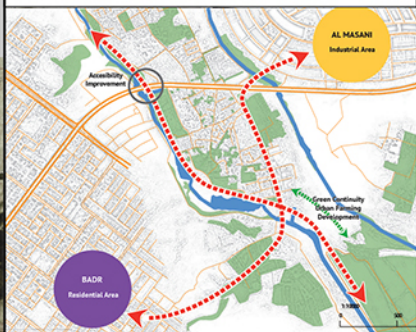


In the midst of rolling golden sands an oasis emerged with gardens of date palms.
 الرياض الحديقة Riyadh (the gardens)



strategic urban/cultural analysis to deliver the appropriate response

The best result is achieved only after a careful cultural and strategic analysis of the existing.



Riyadh, KSA//

The area south of Riyadh, known as Waddi Hanifa Park is an example of a naturalistic approach to leisure. simArpa takes the design one step further and provides ecological housing solutions, sustainable transport systems and a place where cutting edge design meets urban fabric functionality.